



EARMOR[®]

M20T PRO

**ELECTRONIC BLUETOOTH
HEARING PROTECTION EARBUDS**

Congratulations and thanks for your choosing EARMOR®
EARMOR® Hearing Protectors designed to protect users from harmful noise.

Product and accessories



Earbuds



Charging case



Eartips (S/M/L)



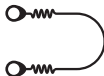
Eartips (S/M/L)



Earpiece caps (S/L)



Windproof sponges



Retention cord

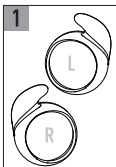


Type-C cable

Fitting Instructions

1. Choose the suitable size for your ear canal
2. Hold the earbuds to confirm that they are clean and dry, and rub the sponge finely
3. Gently pull the ear upwards and insert the earbud into the ear canal
4. After inserting into the ear canal, keep the earbuds straight for about 30 seconds
5. check that the eartips size is appropriate

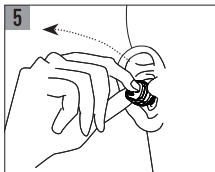
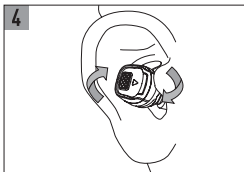
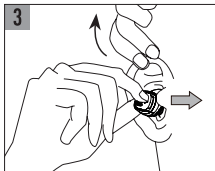
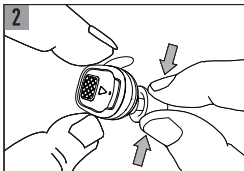
Try pulling the earbuds gently to make sure it won't come loose easily. If it comes out easily, please repeat the above steps



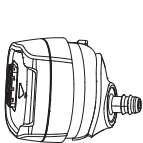
Earpiece caps



Eartips



Installation Instructions



Earbud



Earpiece cap

Retention cord
(Optional)



Eartip

**Wear the appropriate size ear cover on the eartip according to the corresponding direction
(note: make sure that the fixing hole is completely consistent with the fixing post)**

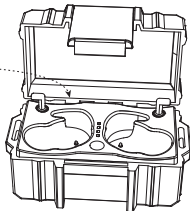
1. To wear the retention cord, please fix one end of the retention cord to the earbud stem
2. Install eartips on the earbuds stem
3. Make sure that the eartips are completely fixed on the eartip stem

Operation instructions

FIRST TIME USE :



Before first time use, put the earbuds into
the charging case for activation.

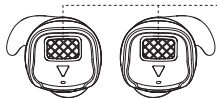


POWER ON & Bluetooth connection

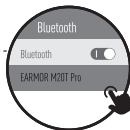
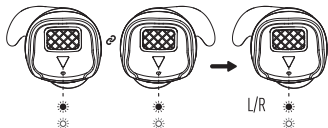


Automatically turn on after the earbuds
taken out of the charging case

or



Press and hold on the left and right earbud for 2 seconds



- Enter the Bluetooth mode automatically when powered on, the indicator light of one earbud flashes red and blue alternately
- The earbuds identification on the device will be "EARMOR M20T Pro"
- You will hear the prompt after Bluetooth connected successfully



Red light

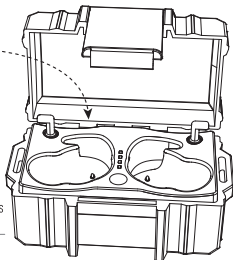


Blue light

POWER OFF



Automatically shut down after the earbuds
placed in the charging case



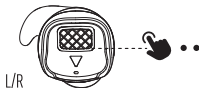
Note: When not in use, the earbuds will automatically power off after 2 hours

or



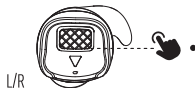
Press and hold on the left or right earbud for 5 seconds

Select language of the prompt



Double-click the left or right earbud without
Bluetooth connection

Ambient listening mode



Click the left or right earbud
the device will play voice prompt saying

Music & phone calls operation

Left earbud



Right earbud



Double-click



Double-click

Triple-click



Triple-click

Double-click



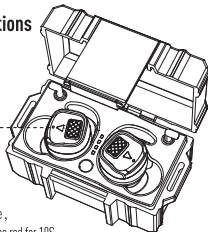
Double-click

Press and hold for 2 seconds

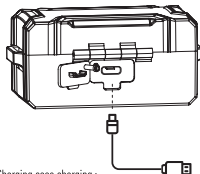


Press and hold for 2 seconds

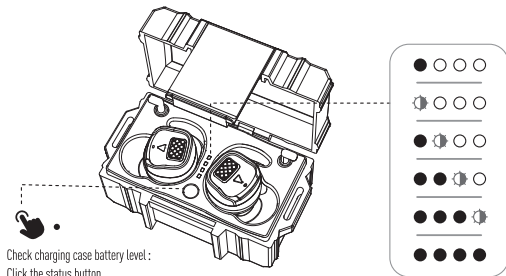
Charging case instructions



Earbuds charging :
Place the earbuds in the charging case ,
the indicator light of the earbuds will be red for 10S

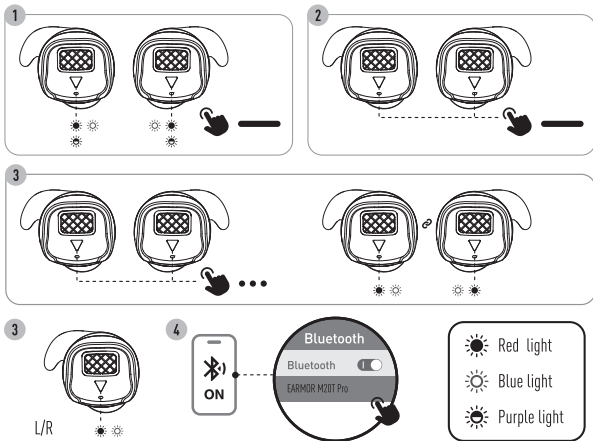


Charging case charging :
Use the Type-C cable to connect the
charging case to the power supply



Charging case light indication	Status	Meaning
● ○ ○ ○	1st white light is on	Low battery
◐ ○ ○ ○	1st white light flashes	Charging
● ◐ ○ ○	1st white light is on , 2nd white light flashes	
● ● ◐ ○	1st and 2nd white lights are on , 3rd white light flashes	
● ● ● ◐	1st ,2nd and 3rd white lights are on , 4th white light flashes	
● ● ● ●	All white lights are on	Fully charged

Reset



When the earbuds are not functioning properly, please follow these steps:

- 1 Press and hold the left and right earbuds for 10 seconds when turned off, after the red and blue indicator lights flash alternately, the purple indicator light lights up for 5 seconds before turning off
- 2 Turn on the earbuds (press and hold on the left and right earbud for 2 seconds)
- 3 Triple-click the left and right earbuds, the indicator light of one earbud flashes red and blue alternately, the other one does not flash
- 4 Please ref. Bluetooth connection

Specifications

Version	V5.4
Battery	Earbuds: 65mAh*2 Charging case: 500mAh
Sound Pickup Characteristics	Omnidirectional
Speaker Size	10mm
Storage Temperature Range	-20°C to 40°C
Weight	Earbuds: 7g*2 Charging case: 66g

Material

Earbuds: Plastics

Charging case: Plastics

Description

EARMOR® M20T Pro can reduce noise to protect hearing, suppress dangerous noise higher than 82 dB, and improve perception and communication skills. It can be used in high-noise environments such as shooting ranges and industries, and the earbuds are more comfortable and lighter to wear and work effectively. High endurance function, convenient to charge in the portable charging case.

Safety information

Please read, understand, and follow all safety information in these instructions prior to using the product. Retain these instructions for future reference.

Important user information

Recommendation that the user should ensure that:

- 1) the earbuds are fitted, adjusted and maintained in accordance with the manufacturer's instructions;
- 2) the earbuds are worn at all times in noisy surroundings;
- 3) the earbuds are regularly inspected for serviceability;

Note: if the recommendations given are not adhered to, the protection afforded by the earbuds will be severely impaired;

Weight of hearing protector: 80 ± 10 g

Storage temperature: -20°C to 40°C

NOTE: Do not store the hearing protector behind a windshield or at temperatures above $+40^{\circ}\text{C}$

Approvals

OPSMEN TECH CO., LTD. declares that the PPE type headset is in compliance with Regulation (EU) 2016/425, Regulation(EC) No 765/2008 and other appropriate directives to fulfill the requirements for the CE marking.

The applicable legislation can be determined by reviewing the Declaration of Conformity (DoC) at <https://www.earmor.com/category/certificates/>.

These PPE products are followed the conformity assessment procedures as EU

type-examination (module B) and conformity to type based on quality assurance of the production process (module D). they are audited annually and type approved by BSI Group The Netherlands B.V., Notified Body No.2797, the address is Say Building, John M. Keynesplein 9, 1066 EP Amsterdam, Netherlands.

EARMOR® M20T Pro Attenuation data, American National Standards Institute specifications: ANSI S3.19-1974

TEST FREQ.(Hz)	125	250	500	1000	2000	3150	4000	6300	8000	NRR(dB)
MEANS	24.8	21.5	30.9	32.5	36.8	47.2	40.2	36.0	31.9	30
STD.DEV	0.5	0.6	0.1	0.5	0.6	0.0	1.2	1.3	0.9	



EARMOR®

GUANGZHOU OPSMEN TECH CO., LTD.

Tel: +86 20 81179170 Fax: +86 20 81179171

Email: info@earmor.com / csf@earmor.com / csf@opsmen.com

Address: Room 601 and 603, Building A, No.94 Liwan Road, Liwan District,
Guangzhou, Guangdong Province, China 510170

